

2018 AEP Annual Convening

Dr. Jeff Schultz, Tuscaloosa City Schools

Sandy Wolfe, Arts Council Tuscaloosa

Wednesday, September 12, 2018

@TCSArts, @TCSBoardofEd, @tuscarts



Who We Are

- 🍃 Tuscaloosa City Schools, Jeff Schultz
 - *The vision of the Tuscaloosa City Schools is to be a premier, innovative school system where each and every student graduates and is fully prepared for life and career success.*
- 🍃 Tuscaloosa Arts Council, Sandy Wolfe
 - *The mission of the Arts Council is to promote and encourage the arts and humanities in Tuscaloosa County.*

Who Are You?

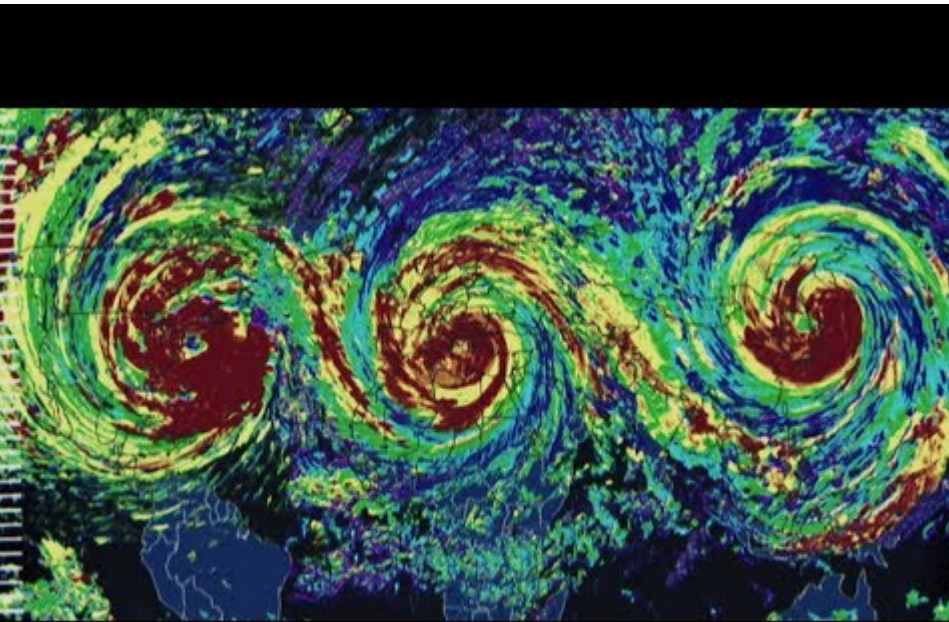


Guiding Question

🍃 What is the one phrase you would most like to hear from your boss?

Navigating Into The Perfect Storm

- What makes a perfect storm?
 - Rare combination of circumstances
 - Significantly alters the environment
 - Impacts lives in profound ways



Our Perfect Storm

- 🍃 Grassroots Advocacy
- 🍃 Local and Regional Leadership
- 🍃 Local and State Arts Innovations



Tuscaloosa – Roll Tide!



Tuscaloosa Arts Council: History and Purpose

Established in 1970 by a group of citizens dedicated to the arts, the mission of The Arts Council is to promote and encourage the arts and humanities in Tuscaloosa County. The Arts Council serves as the umbrella organization for 50 Member Organizations, offers educational programs, and manages the historic Bama Theatre and the Dinah Washington Cultural Arts Center.

Staff

Sandra Wolfe, Executive Director
Sharron Rudowski, Education Director
Jason Armit, Bama Theatre Manager
Kevin Ledgewood, Publicist
Meghan Truhett, CAC Manager

Board of Directors

Amy Ahmed, President
Anne Guthrie, Vice-President
Ann Bourne, Secretary
Christian Williams, Treasurer
Sandra Ray, Past President

Board Members

Kristin Blakeney
Bill Buchanan
Angelo Corrao
D. Jay Cervino
Melanie Edwards
Katherine Gould
Wilson Green
Jason Guynes
Elizabeth Hamner
Luvada Harrison
Nini Jobson
Mort Jordan
Valery Minges
David Nelson
John Owens
Brenda Randall
Darryl Thornton
Debbie Watson
Margaret Wilson

Brought to you by
THE ARTS COUNCIL

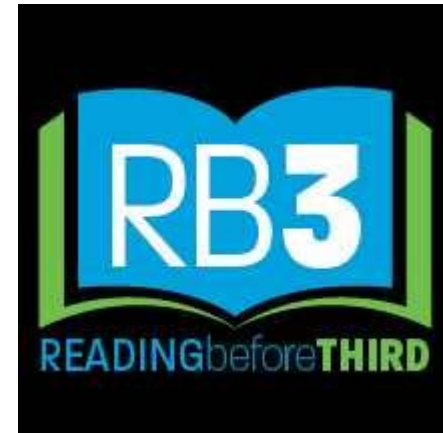
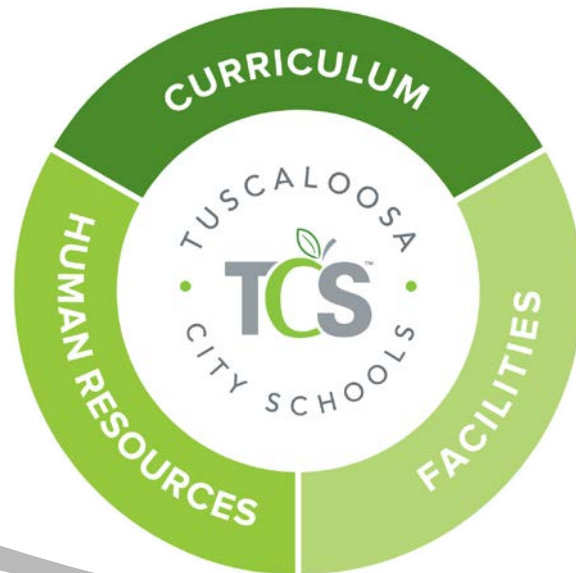


TuscArts Member Organizations

Actor's Charitable Theatre
Alabama Blues Project
Alabama Choir School
Alabama Heritage Magazine
Alabama Public Radio/WUAL
Arts 'n Autism
Brookwood High School Musical Theatre
Department
The Capitol School
Children's Hands-On Museum
City of Tuscaloosa Arts & Entertainment
Crimson Pride Chorus
Drishti
Five Horizons Health Services
Kentuck Museum Association
Kip Tyner Productions
Nano Fiction
The Pointe Society of West Alabama
Prentice Concert Chorale
Shelton Community College -
Scholarship and Fine Arts
Stillman College Fine Arts Department
String Quartet Society of Tuscaloosa
The Dance Initiative
The Mystic Krewe of the Druids
Theatre Tuscaloosa
Tuscaloosa Academy Fine Arts
Tuscaloosa Africana Film Festival
Tuscaloosa Children's Theatre
Tuscaloosa City Schools Fine Arts
Tuscaloosa Community Dancers
Tuscaloosa County High School Drama Program
Tuscaloosa County Preservation Society
Tuscaloosa Public Library
Tuscaloosa Sister Cities International
Tuscaloosa Tourism & Sports Commission
Tuscaloosa Symphony Guild
Tuscaloosa Symphony Orchestra
Tuscaloosa & University Painters
The University of Alabama Community Music School
The University of Alabama College of Arts and Sciences
The University of Alabama Creative Campus
The University of Alabama Department of Art and Art History
The University of Alabama Department of Theatre & Dance
The University of Alabama English Department
The University of Alabama Honors College
The University of Alabama Opera Guild
The University of Alabama Museums
Paul W. Bryant Museum
Alabama Museum of Natural History
Moundville Archaeological Park
The University of Alabama Paul R. Jones Gallery
The University of Alabama Press
The University of Alabama School of Music
West Alabama Quilters Guild

Tuscaloosa City Schools

- 🍃 22 Schools
- 🍃 10, 151 Students
- 🍃 758 Teachers and Other Certified Personnel
- 🍃 65% Free and Reduced Lunch



TCS Arts Programming

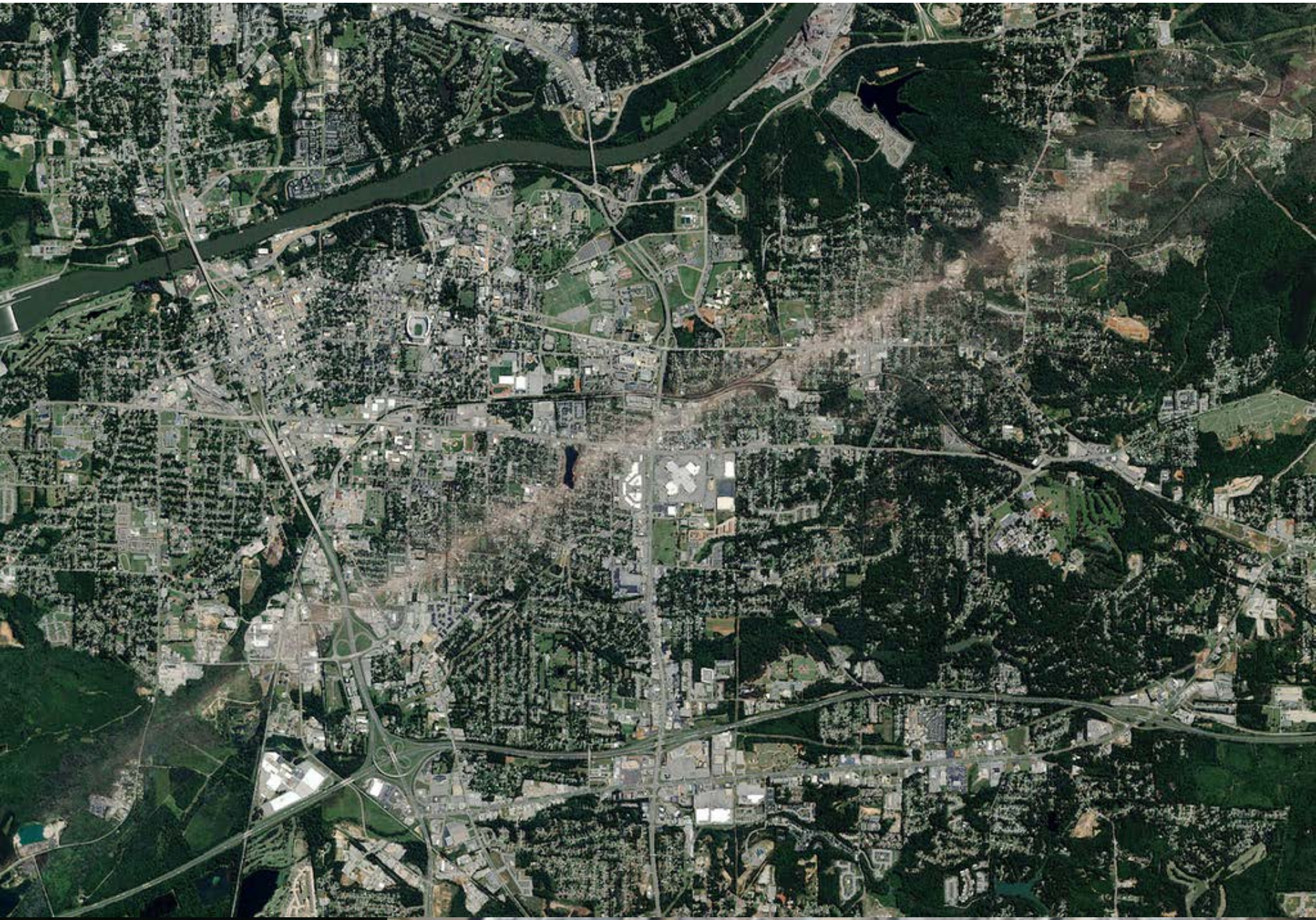
- 🍃 K-5 Art and Music
- 🍃 6-12 Band, Choir, Strings, Visual Art
- 🍃 6-12 Theatre and Dance via Specialty Programs



Leading in Turbulent Waters

- 🍃 2008 – Financial Crisis
 - Large-scale human resources cuts
 - Zero funding





More Turbulent Waters

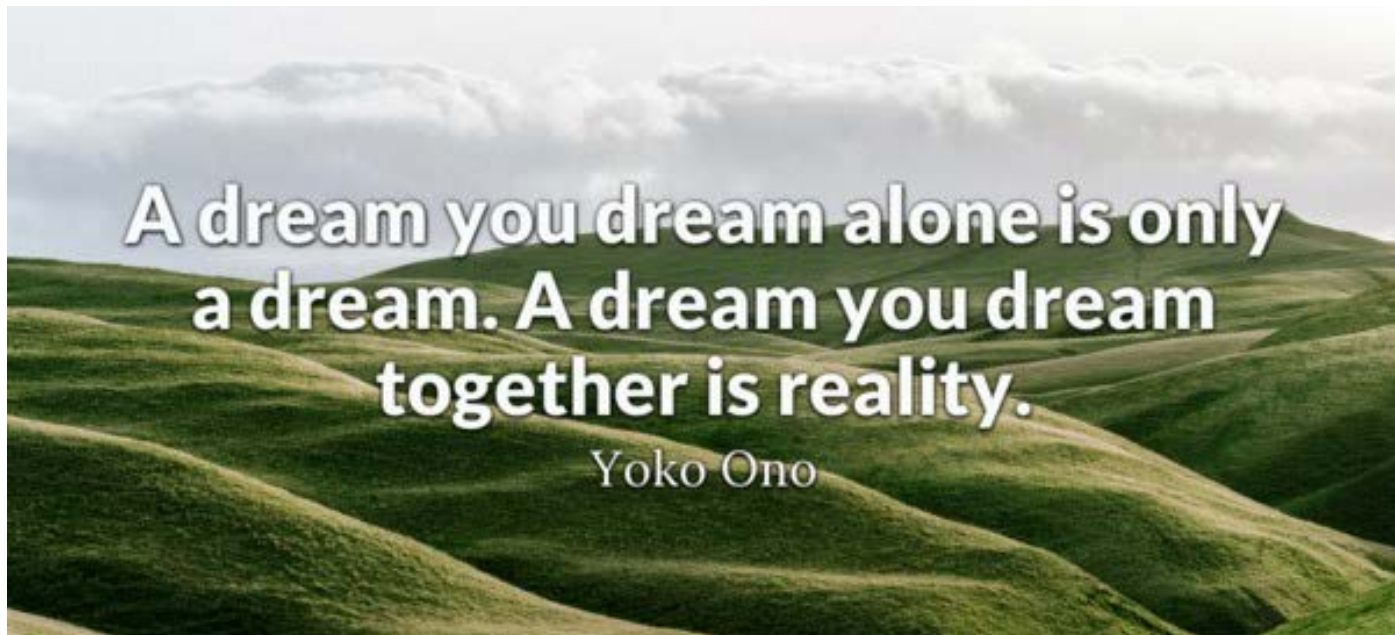
🍃 2011 – 2018

- 1 Arts Supervisor/Teacher then Coordinator
- 3 Superintendents
- 3 Deputy/Assistant/Curriculum
- 6 Directors

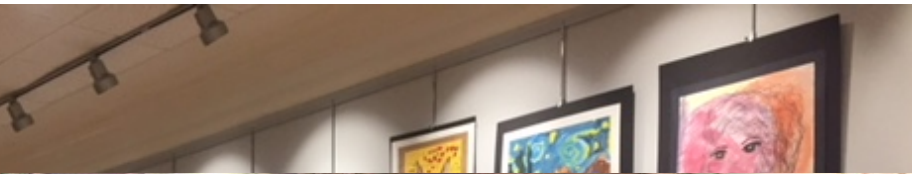


Grassroots Advocacy

- 🍃 2011 - System Level Arts Collaboration
 - Focus on Team; Learning Community
 - Define who we are, what we do
 - Identify priorities and set 1 to 5 year goals



Art Shows and Galleries



Annual Public Events



Advocacy to Growth

- 🍃 Student Successes led to Program Growth
 - Nearly 50 teachers serving 21 schools
- 🍃 Professional Growth
 - Teacher professional growth
 - System professional growth
 - Arts Schools Network
 - Kennedy Center CETA

Growth to Innovation

🍃 Comprehensive Arts Offerings

- The Alberta School of Performing Arts (6-8)
- Tuscaloosa Fine Arts Academy (9-12)
 - Diploma Endorsement in Arts

🍃 Tuscaloosa Can!

- Community Service and Engagement







TCS Arts Moving Forward

- 🍃 Arts Integration in System's Alabama CIP (ACIP)
- 🍃 Arts Strategic Planning
 - Focus on Student Success
 - Social Media Presence
 - Arts Promotion
 - Raise Community and State Awareness
- 🍃 What would you do?

Alabama's Plan for Arts Education

- ❖ Currently, less than 40% of school systems offer arts education programming.
- ❖ Rural communities are impacted the most.
- ❖ Zero FTE support for arts educators in state teacher funding.
- ❖ Zero accountability for arts education programming at the state department.

**CHEERS SUNSHINE! HERE'S TO
YOU AND TO...**



...OUR PERFECT STORM!

memegenerator.net

Alabama's Plan for Arts Education

- ❖ A Leadership team of arts, education, business and community leaders from across the state worked for three years to create the Alabama Plan for Arts Education.
- ❖ The plan was accepted by the State Board of Education (SBE) in March 2016.

The Plan

- Regional Arts Collaboratives: The Plan is centered around strategically placed Regional Resource Centers
 - Tuscaloosa/West Alabama Region
 - Birmingham/Jefferson County
 - Huntsville/North Alabama Region

Regional Arts Education Centers

Goals

- 1) Regional Arts Education Inventories (SPECTRA)
- 2) Arts integration PD for teachers, artists, and arts organizations

Tuscaloosa ArtsEd Resource Center

- 🍃 Leadership Team
- 🍃 Director
- 🍃 Teaching Artist
 - Arts Education
 - Arts Integration
- 🍃 Professional Development
 - Artists
 - Teachers



THE PERFECT STORM



EXCELLENT

Our Message

Stay the course. When thwarted try again; harder; smarter. Persevere relentlessly.

John Wooden

quartzfancy

Your Take Away?



THE PERFECT STORM.

LIVE WITH IT. RIDE THROUGH IT.

imgflip.com

A globe rendered in a watercolor style, featuring vibrant splashes of blue, red, yellow, green, and orange. The word "EARTH" is written across the center in large, bold, white capital letters. The letters "E" and "H" are partially cut off by the left and right green vertical bars, respectively.

EARTH

without ART

is just "EH"