

The Natural State of Early Childhood: Arts & Play

Déjà Bailey
LeAnn Binford

EMPOWERING YOUTH.
CLOSING THE OPPORTUNITY GAP.

PLEASE SCAN QR FOR
ATTENDANCE





Learning Objectives

PARTICIPANTS WILL:

- Explore the Sensory Pyramid of Learning
- Understand how art and creativity activate the brain
- Explore the natural state of play
- Define play personalities
- Experience active learning engagements through art



Agenda

- ❖ Warm Welcome
- ❖ The Brain, Creativity & Art
- ❖ The Natural State of Play
- ❖ Play Personalities
- ❖ Active Learning Engagements
- ❖ Optimistic Closing
- ❖ Q&A





Agreement for Learning



LISTEN FULLY AND
REFLECTIVELY



STEP UP AND
STEP BACK



SUPPORT ONE ANOTHER IN
LEARNING



TABLE PERSONAL
TECHNOLOGY



EXCUSE YOURSELF
IF NECESSARY

Warm Welcome



ART + PLAY = ?

Scan QR Code 1

Art is the imagination at
play in the field of time.
Let yourself play.

Julia Cameron

quotefancy



<https://www.mentimeter.com/app/presentation/n/almacwso1mdxgu9nhtgubuct8bhuyugq/present?question=neqqv4vzw33b>
RESULTS



Early Childhood Domains

Early Childhood Domains create the foundation for 21st Century Skills



Emotional

Language



Cognitive



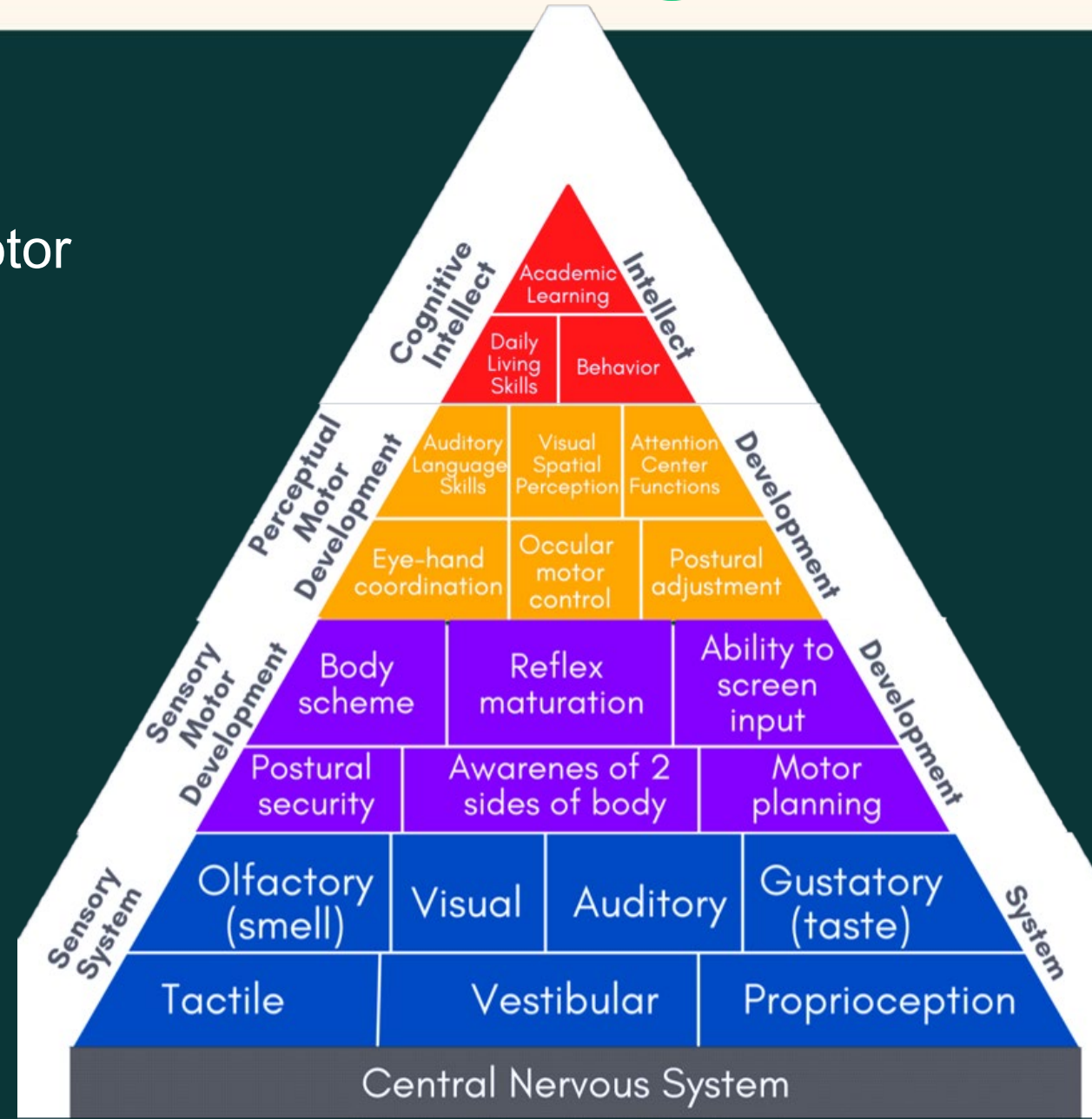
Physical



Sensory Pyramid of Learning

Choose one question to discuss at table:

- 1) What are you noticing about Sensory/Motor Development?
- 2) What Impact can ARTS have on these developments?



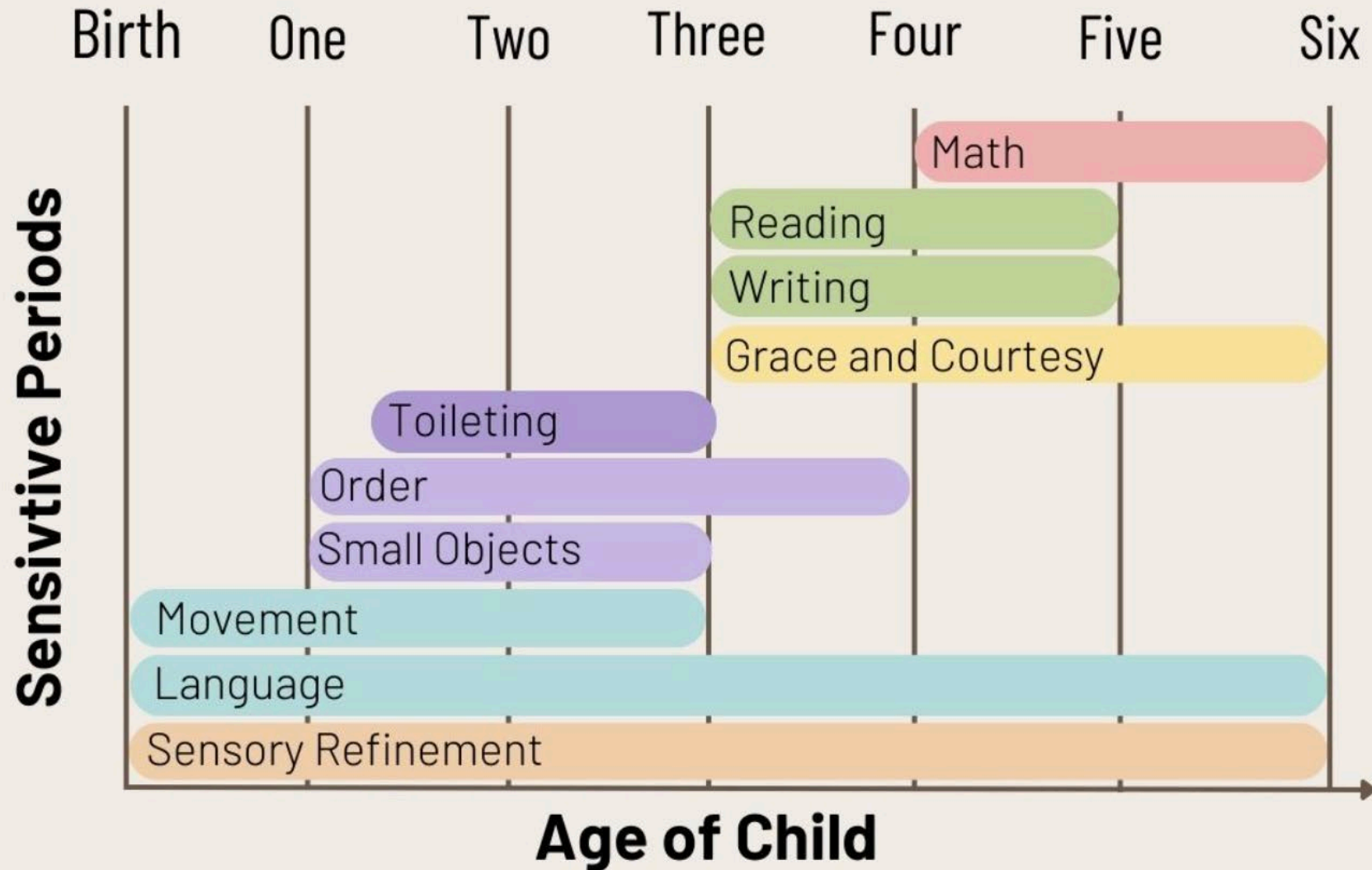
Why Arts in the Early Years



Early exposure to arts and aesthetic experiences can shape the brain, potentially leading to long-term benefits in areas like attention, memory, and emotional regulation.



Sensitive Periods in Montessori Education



What are some developmentally appropriate arts activities for:

- Birth-2 years old
- 3 -6 years old
- 7 years old & up

How Arts Impact the Early Years

6 C'S OF LEARNING



Communication

creative
innovation

Confidence

collaboration

culture/
citizenship

critical Thinking



How Arts Impact the Early Years

Creative Experiences Provide:

- Connections with self & others
- Challenges
- Compare & contrast skills
- Creating to solve problems



THE IMPACT OF ART

"Art is a way children can **play**, communicate, process experiences and feelings, use their **imagination** and negotiate meaning in endless ways".

Magsamen, S., & Ross, I. (2023). *Your brain on art: How the arts transform us*. Random House.



NEW YORK TIMES BESTSELLER

Your Brain on Art

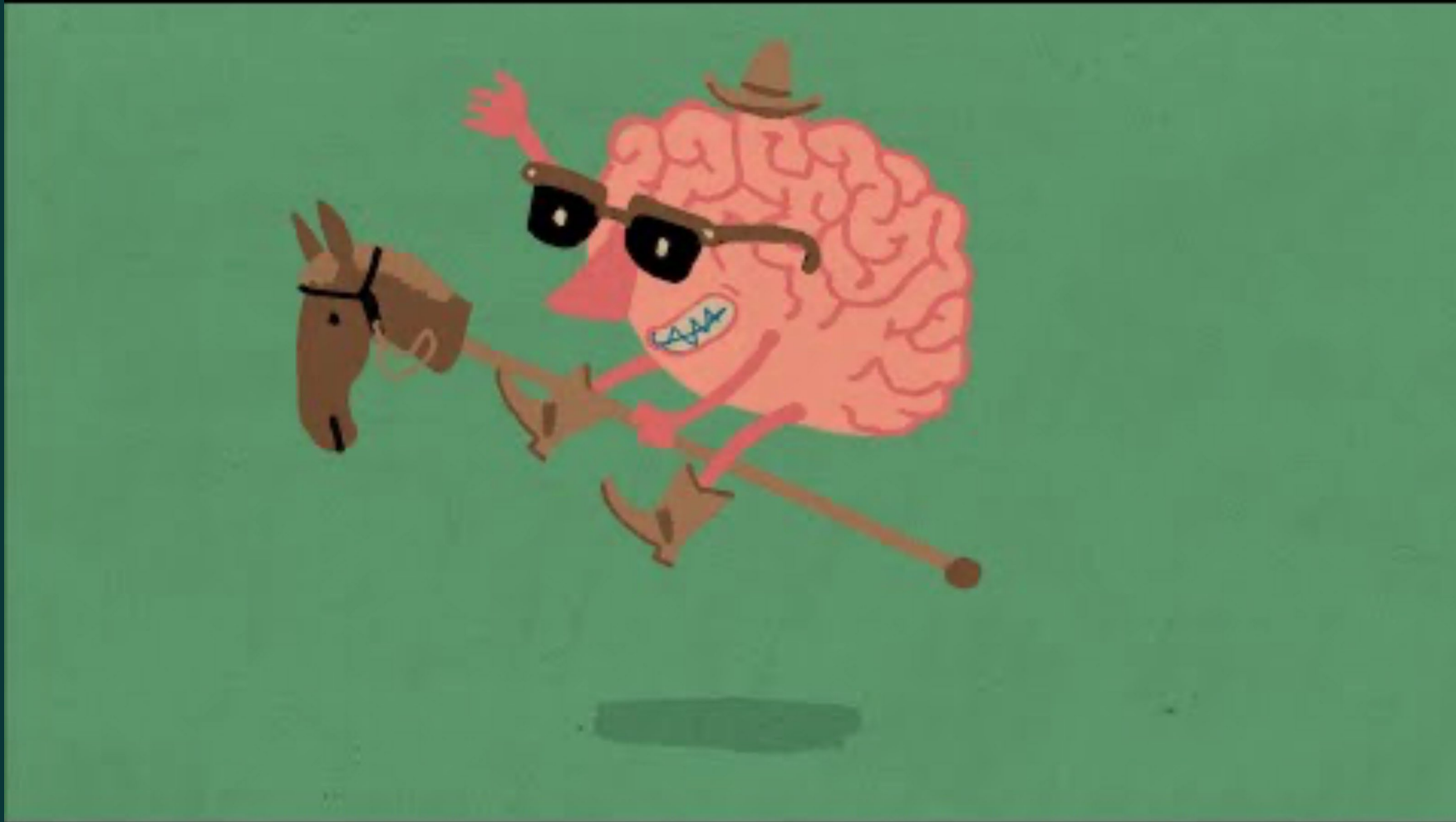
How the Arts
Transform Us

Susan
Magsamen
and Ivy Ross



The Natural State of Play

Brains At Play - NPR ED



Scan QR Code 2 for quiz



***What is your
Play Personality?***



PLAY PERSONALITIES



The Collector



The Competitor



The Creator/Artist



The Director



The Explorer



The Storyteller



The Joker



The Kinesthete

Defining Play Personality

Active Learning Engagements

- Teaching through movement
- Adding in arts
- 3 ways of intentional play
 - Independent
 - Collaborative
 - Immersive



Independent



Independent Learning Activity

Balancing Act



Independent Learning Activity

Cat & Cow



- Place hands on your knees and sit tall, pulling your belly button in towards your spine
- Exhale and roll the spine backwards, rounding your back and looking at your lap
- Slightly arch your back and inhale as you lower your torso towards your thighs and push your chest forward



Collaborative

Type 2

Collaborative Movement

Collaborative Learning Activity

Positive and Negative Space



Immersive

Type 3

Immersive Movement

Immersive Learning Activity

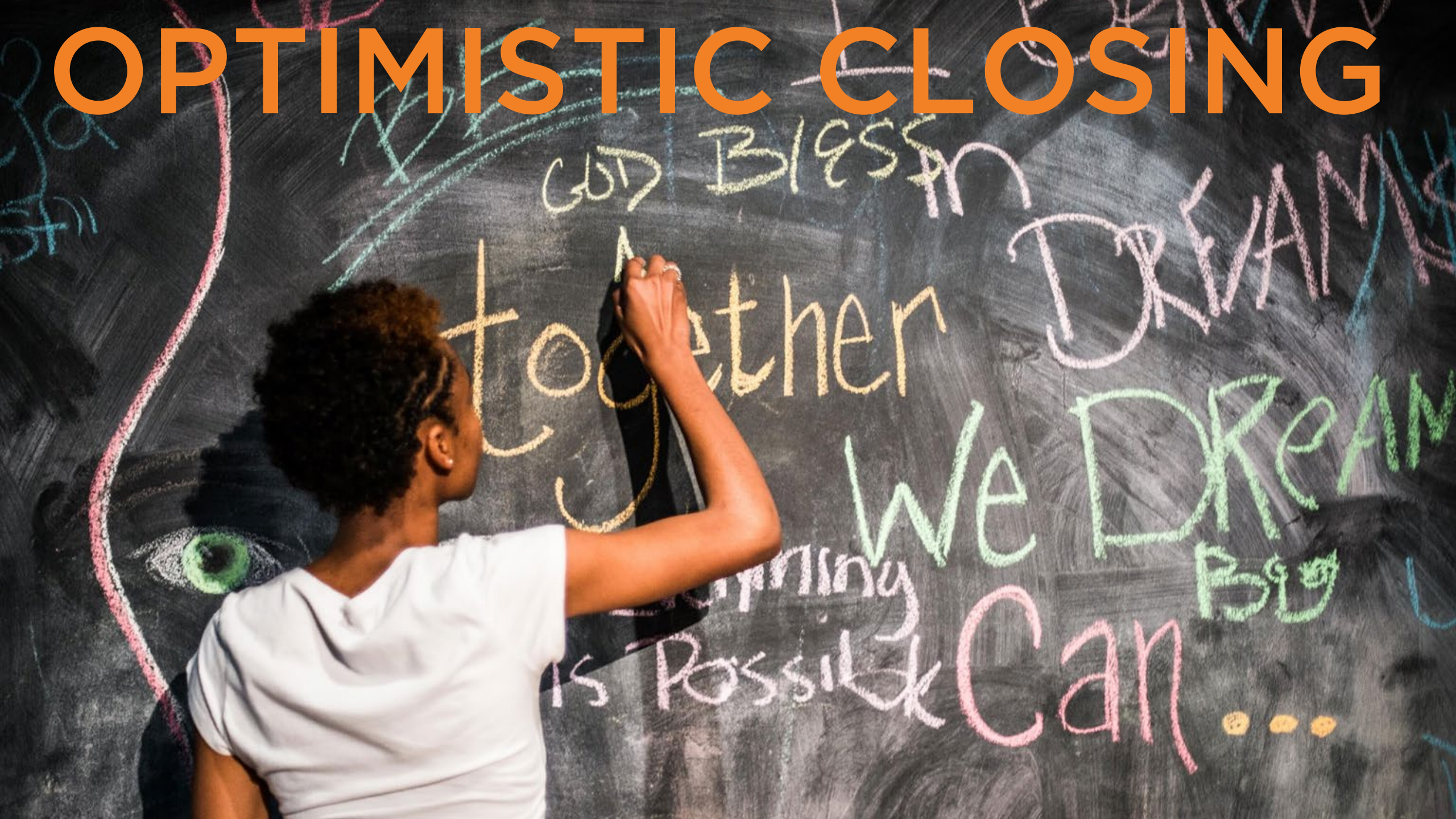
Subconscious Drawing



Content Recap

- Defined art + play for ourselves
- Explored the connection between brain, art and play
- Defined play personalities and discovered our play personality
- Experienced active learning engagements incorporating art and play





OPTIMISTIC CLOSING

GOD Bless

Together

DREAMS

We DREAM

Everything
is Possible

Can ...

Turn & Talk

What is one thing you will do this week to nurture your play personality through the arts?



Q & A



Thank you!

Déjà Bailey
Deja.bailey@bigthought.org

LeAnn Binford
LeAnn.binford@bigthought.org

Please complete
the survey.

